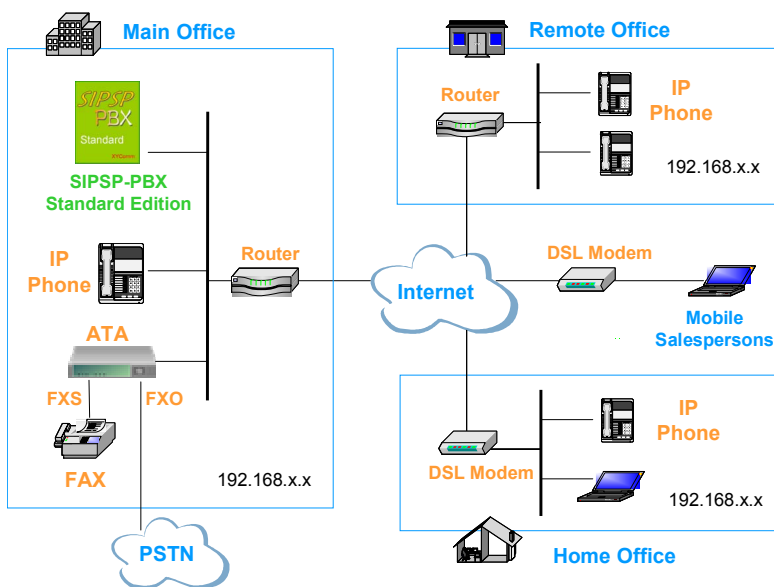


X&YComm SIPSP-PBX is a SIP-based IP-PBX software running on ordinary X86 PC and Windows operating system. Written in pure C language, SIPSP-PBX has proven high performance and stability, with very few consumption of system resources.

SIPSP-PBX Standard Edition, targeting at **small-to-medium businesses**, is an especially simple and easy-to-use edition which also provides rich features to meet business telephony communications requirement.

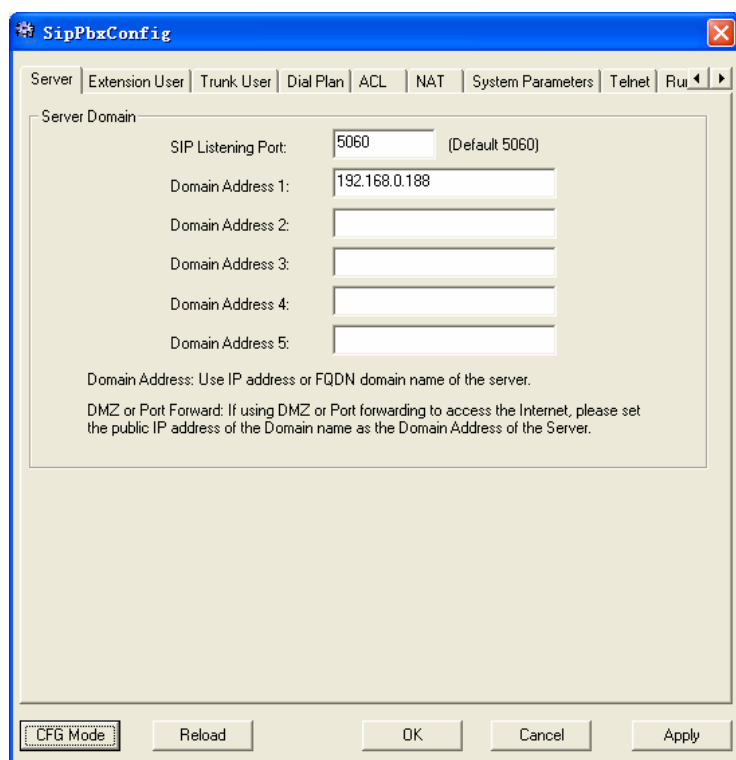
Solution



Features

- **A Small & Neat Software**
No Java. No web server. No database. SIPSP-PBX Standard Edition is just a neat software running on Windows, requiring very few system resources.
- **Easy to Setup**
With a step-by-step installation guide and a simple GUI-based setting utility, SIPSP-PBX Standard Edition is extremely easy to setup.
- **Stable and Reliable**
SIPSP-PBX software is worldwide proved capable of running stably and uninterruptedly without any care. Furthermore, an additional failover watchdog software SIPSP-Startup keeps monitoring the SIPSP-PBX software less than every one minute and will automatically restart it whenever abnormal.
- **Intelligent NAT Solutions**
SIPSP-PBX provides intelligent NAT traversal and RTP relay according to the actual network status and per user settings. Also SIPSP-PBX itself can be located in either public or private networks, supporting various network situations such as DMZ, Dynamic DNS, Port Forward etc.

GUI Configuration



- **Rich and Customizable Features**
SIPSP-PBX supports rich call features like Call Forward, Call Transfer, Call Block, Call Screening, Fax, Instant Message, ACD *, Voicemail *, etc. More customized features can be easily defined.
* Note: together with SIPSP-IVR
- **Powerful Inward / Outward Call Routing**
With flexible settings of Dial Plan, Trunk users, and ACD, powerful call routing policies are supported for both outgoing and incoming calls.
- **Tested Interoperability**

IP Phones

Cisco Grandstream Budgetone, Linksys PAP, PA168s-based IP Phone, SIPURA, Snom, Zyxel

Soft Phones

Nortel SIP Client, SJ-Phone, X-lite

Gateways

Audiocodes MPxx, Grandstream Handytone, Cisco 53xx/26xx/17xx/ATA18x, Linksys PAP, Netgear, Octel, Quantum, SIPURA, Tainet, Vega, Welltech



Specifications

Hardware/ Software	Hardware: PIII 1G/1G HD/128MB Memory at least
	OS: Windows 2000 / Windows XP / Windows 2003
Protocol	SIP: RFC3261 / RFC2543 , UDP/SIP-URL, Configurable SIP Port
Detailed Extension User Control	<p>Multiple Register Modes: Dynamic / Static / No Register</p> <p>Maximum 8 Registration Per User Account</p> <p>Authentication Modes: MD5 / No Auth</p> <p>Configurable NAT Traversal Modes Per User : Off / On / Auto</p> <p>Configurable RTP Relay Modes Per User : Off / On / Auto</p> <p>Maximum Concurrent Calls Restriction Per User</p> <p>Maximum 100 Call Feature Rules Per User</p>
Trunk User	<p>Support Multiple Trunk Users</p> <p>Support Registering to Other SIP Servers</p> <p>Support Routing Calls to / from Other SIP Servers</p> <p>Flexible Inward/Outward Call Feature Control for each Trunk User</p>
Call Routing Inward/ Outward	<p>Flexible Trunk User and Dial Plan settings for Outgoing Calls</p> <p>Flexible Trunk User and ACD feature (with SIPSP-IVR) for Incoming Calls</p> <p>Maximum Dial Plan Rules: 128</p>
CDR Records	CDR Generation and Storage in text files
Intelligent NAT/Firewall Traversal	<p>SIPSP-PBX Can be placed in either public or private networks</p> <p>Support DMZ, Dynamic DNS, Port Forwarding</p> <p>Support Configurable NAT Traversal Mode Per User</p> <p>Support Configurable RTP Relay Mode Per User</p>
Rich Features	<p>Call Forward All , Call Screening, Voicemail, (*with SIPSP-IVR)</p> <p>Call Forward Busy, Call Blocking, ACD, (*with SIPSP-IVR)</p> <p>Call Forward No Answer, Emergency Call, Instant Message,</p> <p>Call Transfer, Anonymous Call, Multimedia (Voice, Video, Data) Services,</p> <p>Call Hold, FAX (T.38), Customized Call Features</p>
Easy Setup & Maintenance	<p>No Need Any Other Software like Java, Web Server, Database etc.</p> <p>Step-by-Step Installation Guide</p> <p>GUI-based Simple Setting Utility</p> <p>System Log Record, with Configurable Log Level</p> <p>Support Telnet Remote Monitor</p> <p>Running Stably and Uninterrupted without any Care</p> <p>Provide Additional Failover Software SIPSP-Startup to Monitor & Restart SIPSP-PBX</p>
Capacity	<p>Max User Accounts: 20 / 50 / 100, with NO restriction for concurrent calls</p> <p>* For more than 100 Users Version , SIPSP-PBX Advanced Edition is Needed.</p> <p>Refer to SIPSP-PBX Advanced Edition Datasheet</p>
Performance	Very High Performance. Totally rely on your hardware.